

## STRUCTURE OF THE ITALIAN CATHOLIC FEDERATION

**Central Council**

The Central Council is the governing body which formulates and directs the programs for the organization which the Branches follow. It is composed of 20 members.

10 Life Members (selected by the Central Council - serve until age 75)

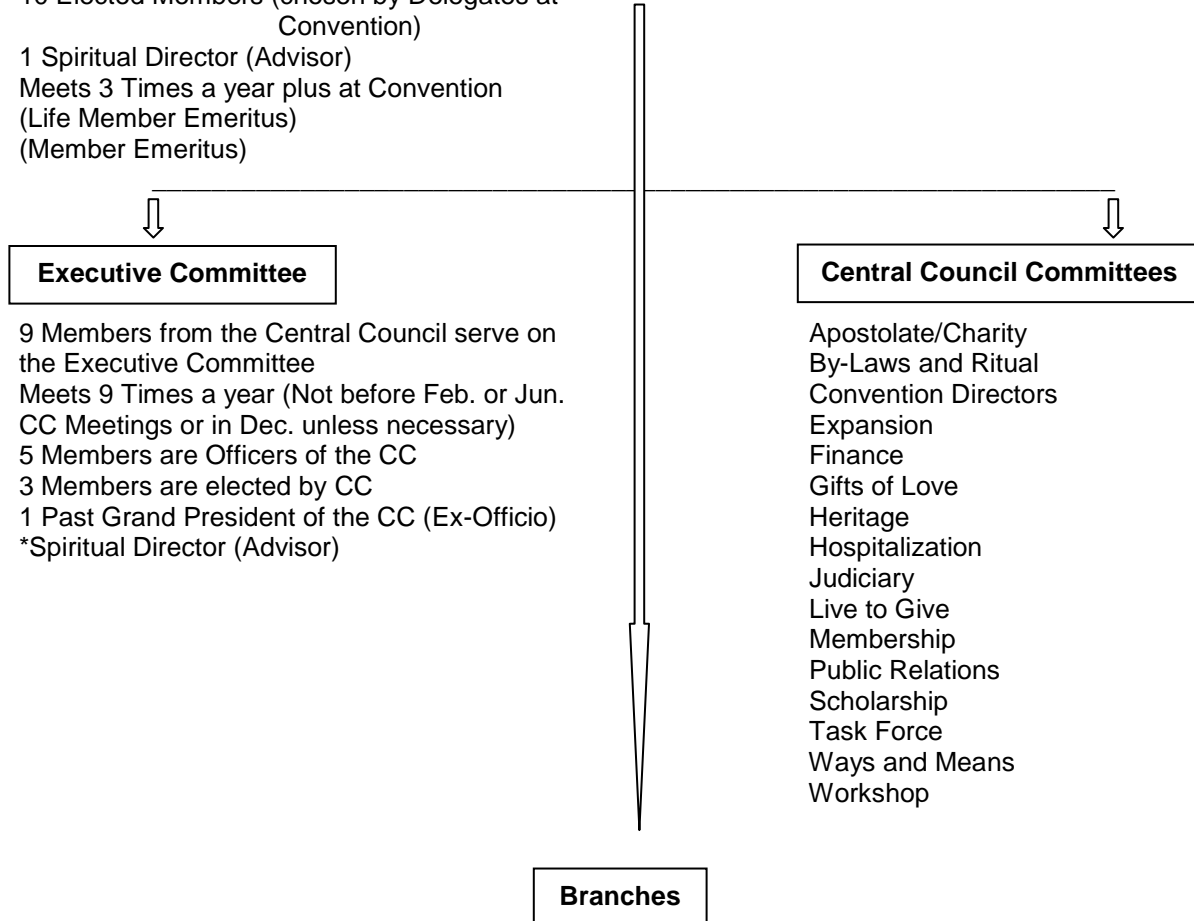
10 Elected Members (chosen by Delegates at Convention)

1 Spiritual Director (Advisor)

Meets 3 Times a year plus at Convention

(Life Member Emeritus)

(Member Emeritus)



**Executive Committee**

9 Members from the Central Council serve on the Executive Committee  
 Meets 9 Times a year (Not before Feb. or Jun. CC Meetings or in Dec. unless necessary)  
 5 Members are Officers of the CC  
 3 Members are elected by CC  
 1 Past Grand President of the CC (Ex-Officio)  
 \*Spiritual Director (Advisor)

**Central Council Committees**

Apostolate/Charity  
 By-Laws and Ritual  
 Convention Directors  
 Expansion  
 Finance  
 Gifts of Love  
 Heritage  
 Hospitalization  
 Judiciary  
 Live to Give  
 Membership  
 Public Relations  
 Scholarship  
 Task Force  
 Ways and Means  
 Workshop

**Branches**

The Branches are the basic units of the Federation and are organized along parish lines. Branches are urged to support their Pastors and participate fully in the ministerial life of the parish.

**District Councils**

The District Councils are composed of Delegates from the Branches within a certain boundary. The Councils have administrative, but not legislative power. They continue to further the ideals and goals of the Federation on a much larger scale than a Branch can do.

**\*\*\*Chairperson of the Deputies – Grand 1<sup>st</sup> Vice President of the CC  
 (Grand 2nd Vice President can assist.)\*\*\***

**District Deputy**

(The District Deputy is a member of the District Council with a vote.)

**Branch Deputy**

(The Branch Deputy is a member of the District Council with a vote)